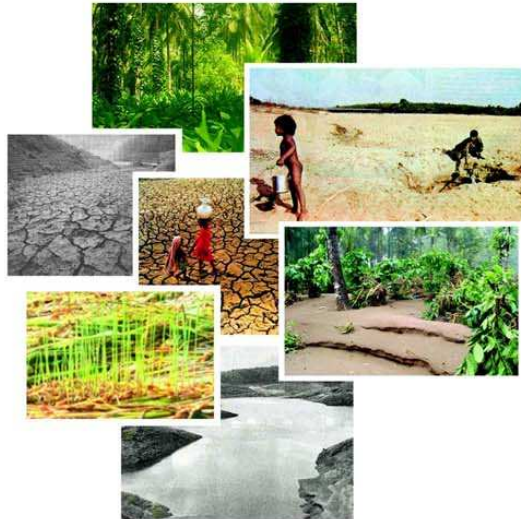




Organized by
Centre for Climate Change Research
KAU



NATIONAL SEMINAR
ON
**CLIMATE CHANGE
ADAPTATION STRATEGIES
IN AGRICULTURE AND
ALLIED SECTORS**

Sponsored by



3-4 DECEMBER, 2009

Venue

Central Auditorium of the Kerala Agricultural University, Vellanikkara, Thrissur.

About Thrissur

KAU Main Campus (Vellanikkara) located on the Thrissur-Palakkad (NH 47) road, 12 km from Thrissur railway station and 60 km from Kochi International Airport. Thrissur, the cultural capital of Kerala is also renowned as the temple city of Kerala. The land of plantation crops and spices is famous for its evergreen scenic beauty. The weather at Thrissur during December will be pleasant having a maximum temperature of 31.7 °C and a minimum of 22.5 °C. Relative Humidity will be ranging from 50% to 74% with likelihood of one or two showers.



Accommodation

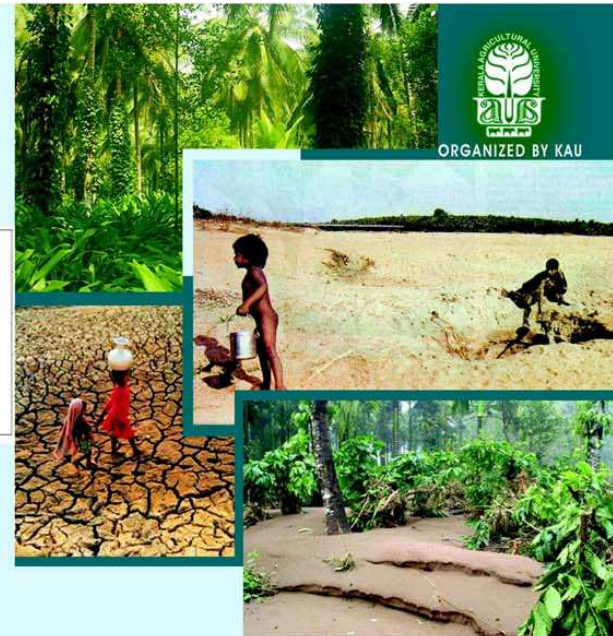
Facilities for accommodation within the campus are limited. Accommodation could be arranged in the Thrissur on request. The current tariff rates are around Rs. 500 for single non A/C, Rs. 500 to 1000 for double non A/C, around Rs. 1000 for single A/c and around Rs. 2000 for double A/C rooms. Accommodation can be booked in advance after receiving advance payment of one day room rent as DD drawn in favour of the Organizing Secretary.

Chief patron: K.R. Viswambharan, Vice Chancellor, KAU

Patron : Winthrop Professor Kadambot Siddique, FTSE Chair in Agriculture and Director Institute of Agriculture University of Western Australia, Perth

Organizing Committee

- Dr. L.S. Rathore, ADG, IMD New Delhi
- Dr. B.Venkateswarlu, Director CRIDA, ICAR, Hyderabad
- Dr. Jobi V. Paul, Registrar, KAU
- Dr. D. Alexander, Director of Research, KAU
- Dr. E. Nanu, Dean and Comptroller, KAU
- Dr. K. Harikrishnan Nair, Dean, FoA, KAU
- Dr. C. Mohankumaran Nair, Dean, FoF
- Dr. V. Ganeshan, Dean, FoAE, KAU
- Dr. M.K. Sheela, Director of Extension, KAU
- Dr. G. Syda Rao, Director, CMFRI (ICAR), Kochi
- Dr. B. Manikiam, Director, ASP, ISRO
- Dr. Akhilesh Gupta, Advisor, CCP, DST, New Delhi
- Dr. P.S. Rao, Advisor, AS, DST, New Delhi
- Prof. H.S. Ram Mohan, Director, SMS, CUSAT, Kochi



NATIONAL SEMINAR

ON

**CLIMATE CHANGE
ADAPTATION STRATEGIES
IN AGRICULTURE AND
ALLIED SECTORS**

Sponsored by



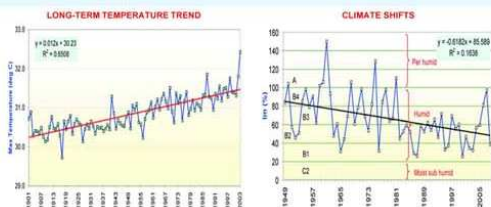
3-4 DECEMBER, 2009

Background

Climate change has become a reality. Models on global warming indicate that rise in temperature is likely to be around 3°C by end of this century. Climate change is associated with increasing greenhouse gases and human-induced aerosols and the imbalance between them may lead to uncertainty even in year-to-year monsoon behaviour over India. Climate change / variability has major impacts on agriculture, water resources, forestry, land and ocean bio-diversity, fisheries, human and animal health and infrastructure. Effects of climate changes, even smooth trends, will not be uniform in space or time. Effects of extreme weather events on crops are very severe and may lead to considerable loss to agricultural production to challenge food security. All-India drought in 2002 caused a loss of about 24 million tonnes in foodgrains production and it is estimated that rice production in the year 2009 could be lowered by 10 million tonnes due to deficient rainfall. Vulnerability to extreme events generally is higher than vulnerability to changing average climatic conditions.

In the past one-hundred years, Kerala experienced decline in annual and monsoon rainfall and increase in temperature. Year-to-year variations in onset, amount and distribution of monsoon rainfall are likely to be influenced under projected climate change scenarios. Driest decade happens to be 1981-90 for Kerala. Severe summer droughts were noticed in 1983 and 2004 during which the surface water resources became scarce, led to hydrological droughts and the State's economy was hit very badly. Recent drought during summer 2004 over Kerala, led to increase in maximum temperature of 1-3°C during Feb-Mar and thermo-sensitive crops like black pepper, cocoa and cardamom across the high ranges and several other perennial crops suffered to a large extent. In 2007, heavy monsoon rains prolonged the crop season and adversely affected the paddy production. Again, unusual rains in March 2008 devastated the rice, when it was in harvesting stage.

Aberrations in weather are being experienced more frequently and Agriculture being the most vulnerable to climate changes, it is an urgent imperative that adaptation strategies need to be developed for sustaining and enhancing agricultural production for achieving food security to the ever-increasing population. To review and identify gaps in our knowledge in climate change adaptation strategies, the following themes are proposed:



Trends indicate 0.8°C rise in maximum temperature over Kerala. Rainfall in the southwest monsoon season appears to decrease while the post-monsoon rainfall shows a slight increasing trend. Climate analysis indicates decline in the moisture index leading to change in climate from wetness to dryness within the humid climate system.

Themes of the Seminar

1. Extreme weather events
2. Climate change / variability
3. Agroadvisory services based on weather forecasting
4. Crop growth simulation models and crop projections
5. Climate change adaptation strategies in
 - a. Agriculture, b. Water resources, c. Forestry, d. Land and Ocean biodiversity, e. Animal Sciences, f. Fisheries

Expected outcomes of the Seminar

- Common platform for farmers, students, teachers, scientists and policy makers to interact in relation to climate change adaptation strategies
- Base for developing human resources
- Formulating multi-disciplinary and multi-institutional research projects
- Enhanced awareness on climate change adaptation

Call for papers

Research contributions in the identified themes are invited for oral presentation. The extended summary not exceeding 300 words may be submitted latest by October 15, 2009. It should be prepared on A4 paper in MS word using Times New Roman with font size of 12 pt and line spacing 1.5. Extended summary should contain title, name of authors with affiliation and address, objectives, materials and methods, results and discussion. Two hard copies and one soft copy of the extended summary should be submitted. Subject experts will present Lead Papers in each theme area.

Registration

Seminar participants are required to register before 15 Nov 2009 by paying a registration fee of Rs. 1000/- by DD drawn in favour of "The Organizing Secretary, National Seminar on Climate Change Adaptation Strategies in Agriculture and allied sectors", payable at State Bank of Travancore, KAU Campus (code 7670). TA, lodging and boarding expenses have to be met by the participants themselves.

Important dates

Last date for receipt of extended summary	: 15 Oct 2009
Intimation of acceptance of paper	: 31 Oct 2009
Last date for registration	: 15 Nov 2009
Submission of full text of paper	: 15 Nov 2009

Contact addresses

1. **Dr. GSLHV Prasada Rao**, Organizing Secretary of Seminar and Associate Director of Research, Centre for Climate Change Research, KAU P.O. Thrissur- 680 656, Kerala, Phone: 0487-2371931 (O), 0487-2373938 (R)
Email: kauagmet@yahoo.co.in. Mobile: 9446573931
2. **Dr. AVR Kesava Rao**, Professor of Agrometeorology, Centre for Climate Change Research, KAU P.O. Thrissur- 680 656, Kerala. Phone: 0487- 2371931 (O).
Email: kauagmet@yahoo.co.in. Mobile: 9447070013
visit : www.kau.edu

REGISTRATION FORM

NATIONAL SEMINAR
on

Climate Change Adaptation Strategies in Agriculture and Allied sectors

3 - 4 DECEMBER 2009

Name

Designation

Address for Correspondence

Tel (O)

(R)

Mobile

Fax

Email

Are you presenting a paper? Yes/No Oral / Poser
if 'Yes', give the title of the paper below :

Accommodation required? Yes / No
Are you vegetarian? Yes / No.

Please find enclosed registration fee of Rs. 1000/- (Rupees one thousand only) as demand draft drawn in favour of Organising Secretary, National Seminar on Climate Change Adaptation Strategies in Agriculture and Allied sectors, payable at SBT, Vellanikkara.

The registration fee included the cost of conference material, lunch and refreshments during the conference days. Accommodation charges will be met by the delegates themselves.